



ANCHORS COMPLETE COLLECTION

HOLLOW WALL | UNIVERSAL | MASONRY



Richelieu adds new, innovative products to its complete line of anchoring hardware. Now even more effective and easy to use. Richelieu's high-quality anchors are very functional and a great help in all your projects.



➤ **HOLLOW WALL** anchor:
for use in drywall, tile or plaster



➤ **UNIVERSAL** anchor:
for use in hollow walls or solid walls

➤ **MASONRY** anchor:
for use in concrete, block or brick

Ideal for commercial and residential applications.



HOLLOW WALL



■ Zinc-plated



Advantages and benefits

A solid anchor. Requires pre-drilling, contrary to the expanding drive anchor with machine screw.



Application

Drywall

Product	Diameter	Grip range	Quantity
HWA18LMK	1/8" (long)	5/8" to 1"	Blister of 10 un.
HWA18SMK	1/8" (short)	3/8" to 1/2"	Blister of 10 un.
HWA18XSMK	1/8" (extra-short)	3/8" to 1/2"	Blister of 12 un.
HWA316LMK	3/16" (long)	5/8" to 1"	Blister of 6 un.
HWA316SMK	3/16" (short)	3/8" to 1/2"	Blister of 8 un.

EXPANDING DRIVE ANCHOR WITH MACHINE SCREW



■ Zinc-plated

■ 1/8" diameter



Advantages and benefits

Does not require pre-drilling; installs with a hammer.



Application

Drywall

Product	Quantity
HWDA18LDMK	Blister of 6 units
HWDA18SDMK	Blister of 8 units

HOLLOW WALL

SNAP-TOGGLE

Walls and ceilings



- Heavy-duty, adjustable strap toggle bolt
- Ultra seal, Yellow zinc, and plastic
- #10-24 screw size (included)

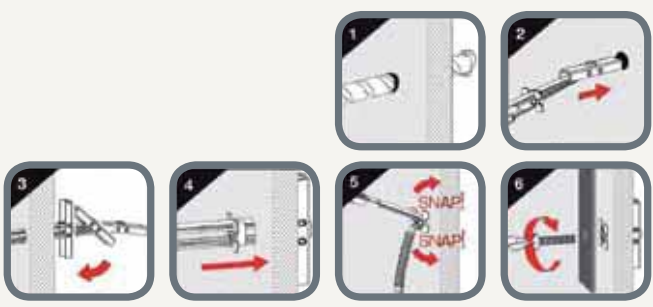
Advantages and benefits
Ideal for ceiling applications thanks to a high load capacity.

Application
For drywall, tile, plaster, and block.

Safe load

Drywall 1/2"	125 lb 56 kg	60 lb 27 kg
Concrete	200 lb 90 kg	200 lb 90 kg

Product	Quantity
TGST316212VDJ	Box of 20
TGST316212VDMX	Blister of 6 units
TGST316212VMX	Blister of 2 units



WALL-IT

Walls and ceilings



- Self-drilling toggle bolt
- Zinc-plated
- 1/8" diameter
- 2 1/2" long
- #6-32 screw size (included)

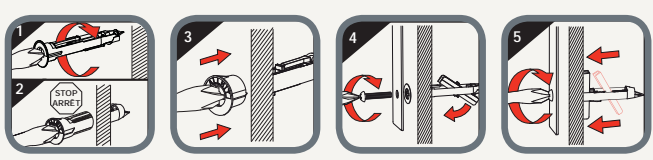
Advantages and benefits
• Quick installation: no drilling
• High strength
• Vibration resistance

Application
For drywall only.

Safe load

Drywall 1/2"	80 lb 25 kg	25 lb 11 kg

Product	Quantity
WIT18212VJ	Box of 50
WIT18212VMX	Blister of 6 units



SNAPSKRU

Walls only



- Self-drilling expanding anchor
- Plastic
- #8 screw size (included)

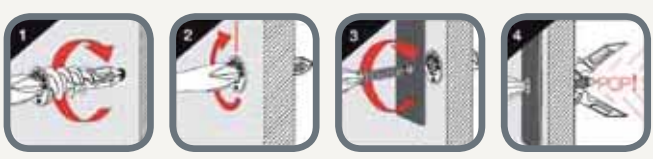
Advantages and benefits
• The quickest and easiest anchor to install
• Strongest holding of all self-drilling drywall anchors
• audible "POP" indicates correct installation

Application
For drywall only.

Safe load

Drywall 1/2"	65 lb 29 kg	✗

Product	Included	Quantity
TGSS8VJ	#8 screw	Box of 70
TGSS8VMX	#8 screw	Blister of 10 units



WALL-ARROW

Walls only



- Tap-in wedge anchor
- Yellow
- Screws included

Advantages and benefits
The best choice to minimize damage to drywall.

Application
For drywall only.

Safe load

Drywall 1/2"	40 lb 18 kg	✗

Product	Quantity
TWA6VJ	Box of 150
TWA6VMX	Blister of 10 units

NYLON SHIELD

Walls only



- **Self-drilling anchor**
- ✓ **Advantages and benefits**
Easy to use.
- **Application**
Drywall

Product	Screw size	Length	Quantity
NA6SVMK	#6	1 1/8"	Blister of 6 units
NA6SVMX	#6	1 1/8"	Blister of 18 units
NA6SVA	#6	1 1/8"	Box of 50
NA8LC1	#8	1 5/8"	Box of 100
NA8VMK	#8	1 5/8"	Blister of 5 units
NA8VMX	#8	1 5/8"	Blister of 15 units
NA8LVA	#8	1 5/8"	Box of 40

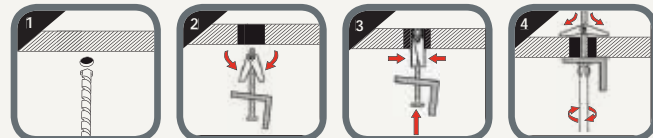


SPRING TOGGLE BOLT



- **Zinc-plated**
- ✓ **Advantages and benefits**
A highly effective and classic design, trusted and used for decades.
- **Application**
Can be used with any hollow material.

Product	Diameter	Length	Quantity
STZ143VMK	1/4"	3"	Blister of 2 units
STZ143VVA	1/4"	3"	Box of 15
STZ144VMK	1/4"	4"	Blister of 2 units
STZ144VVA	1/4"	4"	Box of 15
STZ182VMK	1/8"	2"	Blister of 4 units
STZ182VVA	1/8"	2"	Box of 25
STZ183VMK	1/8"	3"	Blister of 4 units
STZ183VVA	1/8"	3"	Box of 25
STZ3163VMK	3/16"	3"	Blister of 4 units
STZ3163VVA	3/16"	3"	Box of 20
STZ3164VMK	3/16"	4"	Blister of 4 units
STZ3164VVA	3/16"	4"	Box of 20



METAL SHIELD

Walls only



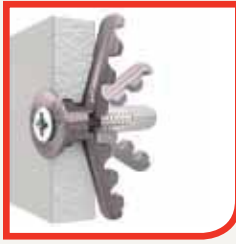
- **Self-drilling anchor**
- **Zinc-Plated**
- **1 5/8" long**
- **#8 screw size**
- ✓ **Advantages and benefits**
Easy to use.
- **Application**
Drywall

Product	Quantity
MA8LC1	Box of 100
MA8LJ	Box of 150
MA8VMK	Blister of 5 units
MA8VMX	Blister of 15 units
MA8LVA	Box of 40



ALLIGATOR

Walls and ceilings



- All-purpose expandable anchor
- Polymer

- ✔ **Advantages and benefits**
- The strongest anchor in concrete and solid walls
 - Rust-resistant screws

- ➔ **Application**
- For drywall, tile, plaster, concrete, block, or brick.

Safe load

Drywall 1/2"	70 lb 31 kg	Concrete	281 lb 127 kg
	✗		256 lb 116 kg

Product	Included	Screw Size	Quantity
TGA14J	-	#6-8-10-12 screw	Box of 75
TGA14VDJ*	#8 screw (1 1/2")	#6-8-10-12 screw	Box of 75
TGA14VDMX*	#8 screw (1 1/2")	#6-8-10-12 screw	Blister of 10 un.
TGA516J	-	#8-10-12-14 screw +1/4 Lag	Box of 50
TGA516VDJ*	#12 Screw (2")	#8-10-12-14 screw +1/4 Lag	Box of 50
TGA516VDMX*	#12 Screw (2")	#8-10-12-14 screw +1/4 Lag	Blister of 10 un.

*Masonry drill bit included

MP

Walls and ceilings



- Multi-purpose toggle anchor.
- Plastic
- #8 screw size (included)

- ✔ **Advantages and benefits**
- The most versatile anchor: strong in drywall, and strong in concrete
 - Rust-resistant screws

- ➔ **Application**
- For drywall, tile, plaster, concrete, block, or brick.

Safe load

Drywall 1/2"	75 lb 34 kg
Concrete	20 lb 9 kg
	130 lb 58 kg
	40 lb 18 kg

Product	Quantity
TGPT12VDMX	Blister of 10 units
TGPT12VVA	Box of 30

PLASTIC SHIELD



- ➔ **Advantages and benefits**
- Easy to install
 - Can be installed with most screw types
 - Notched wings to prevent rotation of the anchor as the screw is inserted

- ✔ **Application**
- For concrete, block, or brick.

- The most universally used anchor
- 2 expansion points to prevent rotation

Product	Included	Screw Size	Diameter	Color	Quantity
PA14J	-	#8-9-10 screw	1/4"	Blue	Box of 400
PA14MK	-	#8-9-10 screw	1/4"	Blue	Blister of 16 units
PA14VA	-	#8-9-10 screw	1/4"	Blue	Box of 100
PA14VMK	#8 screw (1 1/4")	#8-9-10 screw	1/4"	Blue	Blister of 8 units
PA316J	-	#5-6-7-8 screw	3/16"	Yellow	Box of 800
PA316M1	-	#5-6-7-8 screw	3/16"	Yellow	Box of 1000
PA316MK	-	#5-6-7-8 screw	3/16"	Yellow	Blister of 20 units
PA316VA	-	#5-6-7-8 screw	3/16"	Yellow	Box of 150
PA316VMK	#8 screw (1")	#5-6-7-8 screw	3/16"	Yellow	Blister of 10 units
PA516MK	-	#12-14 screw	5/16"	Green	Blister of 12 units
PA516VA	-	#12-14 screw	5/16"	Green	Box of 100
PA516VMK	Screw #10 (1 1/2")	#12-14 screw	5/16"	Green	Blister of 6 units

CANADA

Tel.: 1 800 361-6000 | Fax: 1 800 363-0193

ALBERTA

Calgary
Edmonton

BRITISH COLUMBIA

Kelowna
Vancouver
Victoria

MANITOBA

Winnipeg

NEW BRUNSWICK

Moncton

NEWFOUNDLAND

St. John's

NOVA SCOTIA

Halifax

ONTARIO

Barrie
Kitchener
Mississauga
Ottawa
Sudbury
Thunder Bay
Toronto

QUÉBEC

Drummondville
Laval
Longueuil
Montréal
Québec

SASKATCHEWAN

Regina
Saskatoon

UNITED STATES

Tel.: 1 800 619-5446 | Fax: 1 800 876-7454

CONNECTICUT

Hartford

FLORIDA

Dania Beach
Hialeah
Pompano Beach
Riviera Beach

GEORGIA

Atlanta

ILLINOIS

Chicago

INDIANA

Indianapolis

KENTUCKY

Louisville

MASSACHUSETTS

Boston

MICHIGAN

Detroit

NEW JERSEY

Avenel
Lincoln Park

NEW YORK

New York
Syracuse

NORTH CAROLINA

Charlotte
Greensboro
High Point
Raleigh

OHIO

Cincinnati
Cleveland
Columbus

OREGON

Portland

SOUTH CAROLINA

Greenville

TENNESSEE

Nashville

WASHINGTON

Seattle

